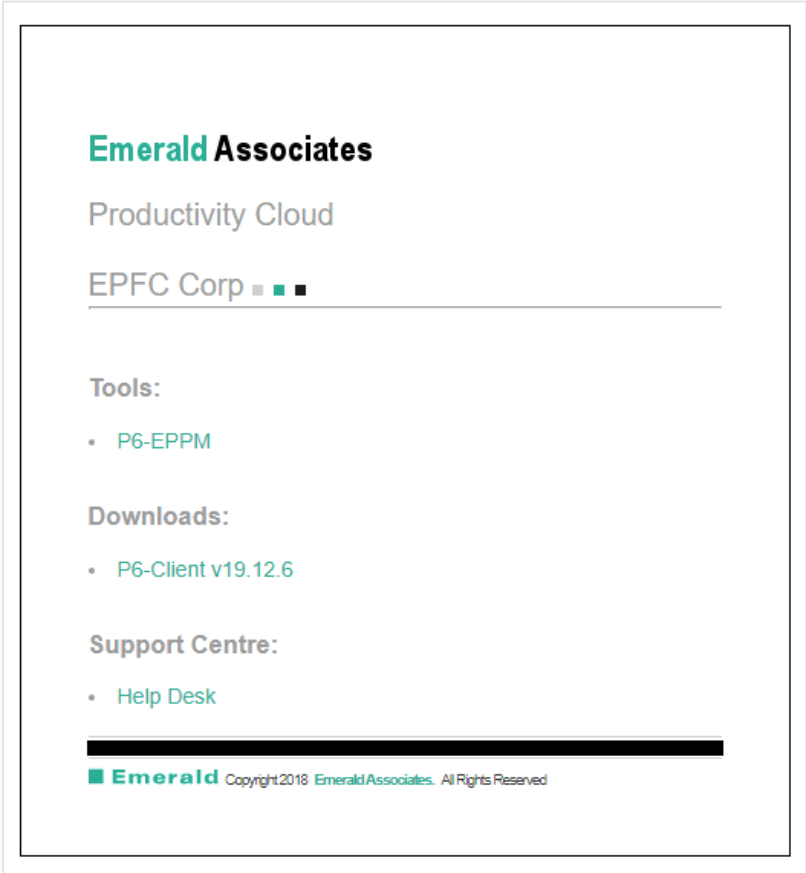


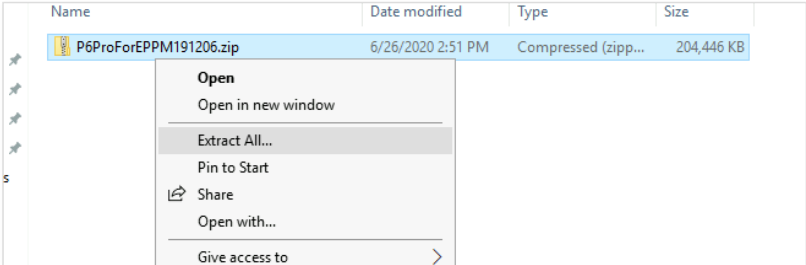
EPFC 19.12.6 - P6 EPPM Connect

Download and Install client

URL: <https://p6epfc-v19.emerald-associates.com/>



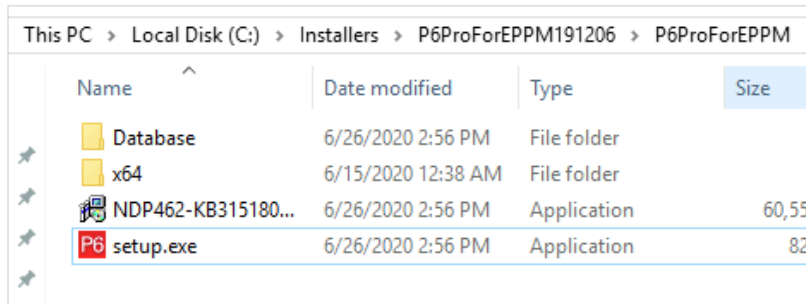
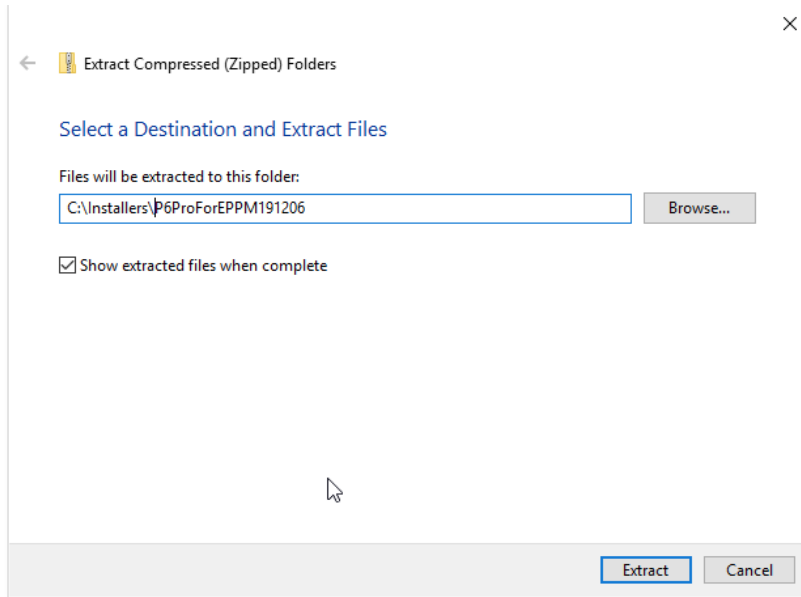
Click over "P6 Client v19.12.6" and save the file



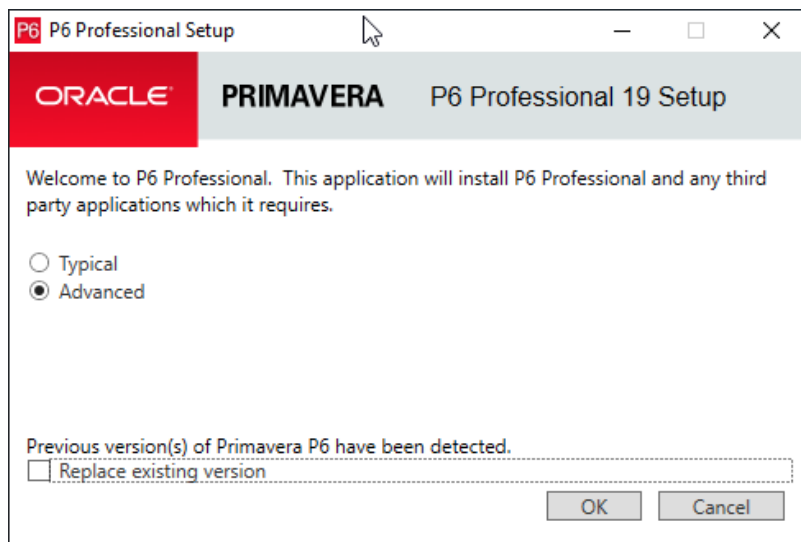
Right-click over the download file and select "Extract All..."



Define a folder and client "extract"

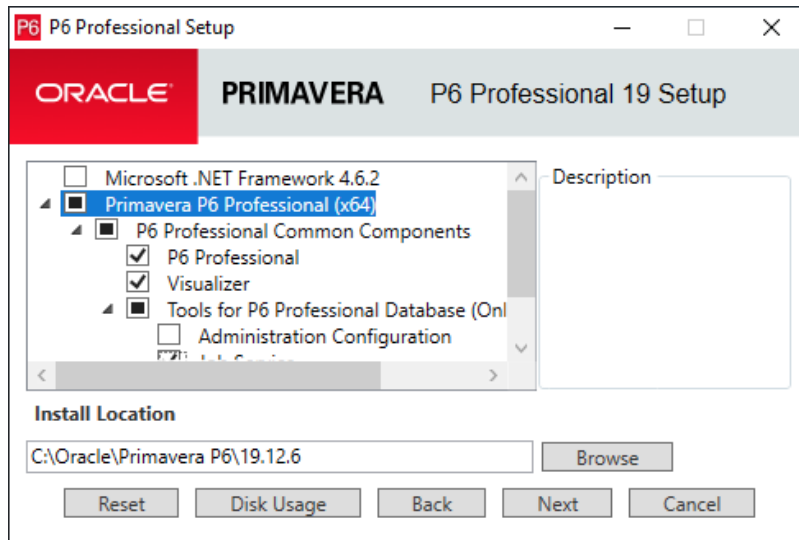


Go to the folder where it was extracted and double-click "setup.exe"



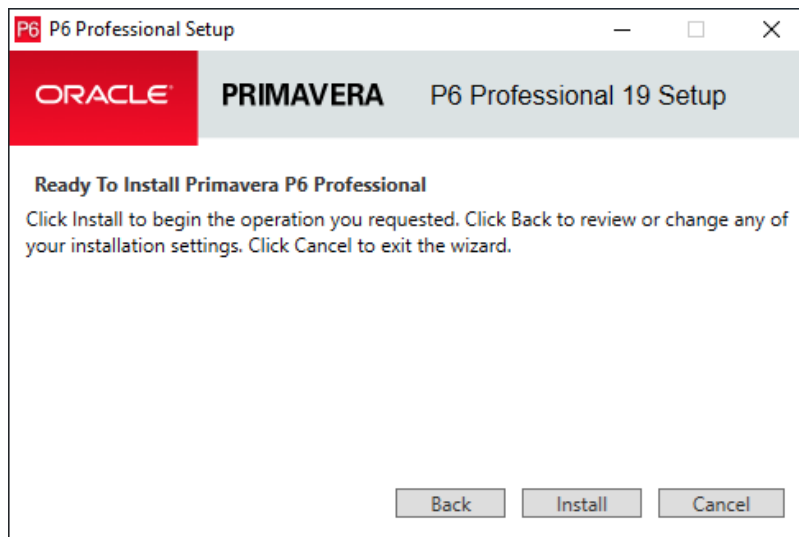
Remove checkmark from "Replace existing data" if checked.

Choose Advanced install.



If you click over "Primavera P6 Professional (x64)", it will allow you to change the "Install Location".

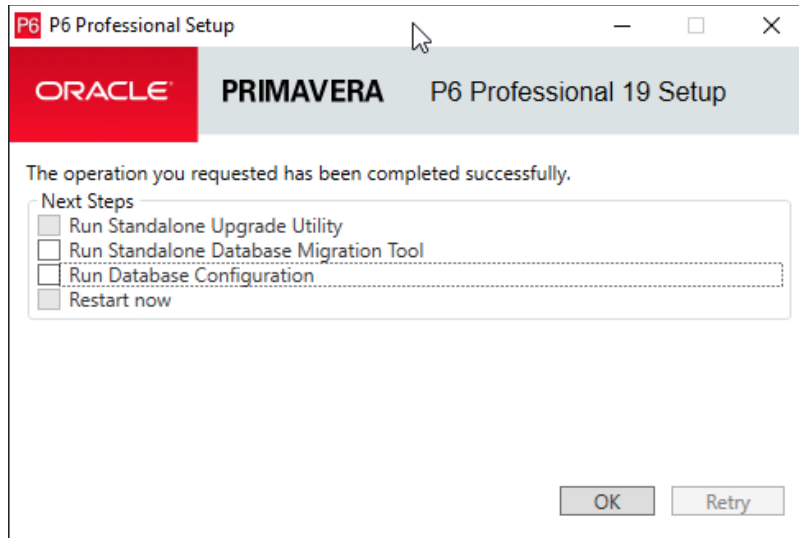
Click Next.



Click Install.

Remove all checkmarks.

Click OK.



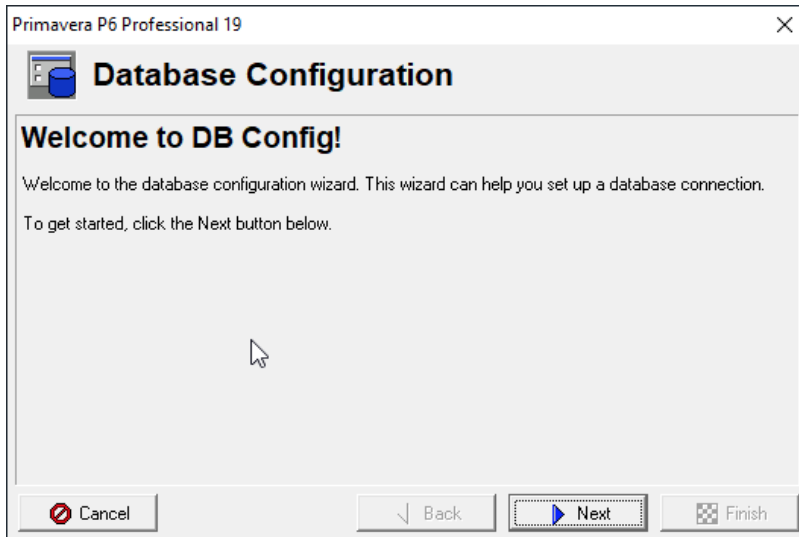
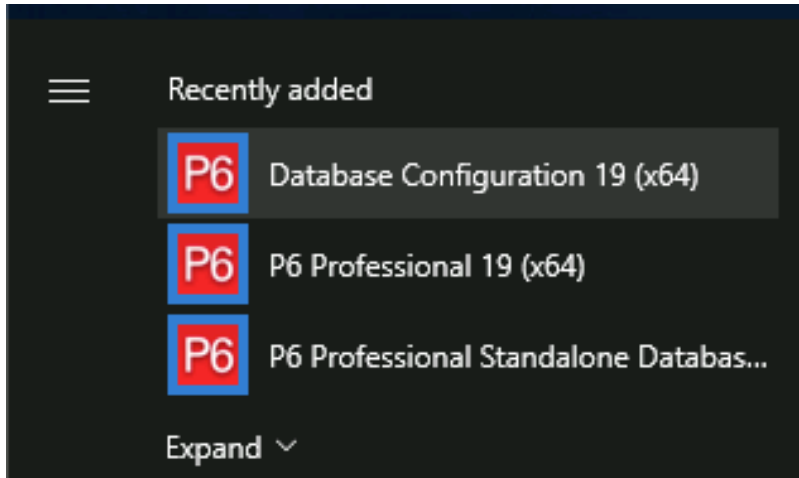
Configuring database connection

Database connections

	A	B
1		EPFC
2	Database Alias	EPFC
3	Dirver Type	P6 Pro Cloud Connect
4	Database (*)	EPFC
5	URL	https://p6epfc-v19.emerald-associates.com/p6procloudconnect/
6	Read Timeout	9999
7	Use SAML SSO	Disabled
8	Enable Client-side Cache	Disabled
9		
10		EPFC-DEV
11	Database Alias	EPFC-DEV
12	Dirver Type	P6 Pro Cloud Connect
13	Database (*)	EPFC-DEV
14	URL	https://p6epfc-v19.emerald-associates.com/p6procloudconnect/
15	Read Timeout	9999
16	Use SAML SSO	Disabled
17	Enable Client-side Cache	Disabled
18		

CREATING THE CONNECTIONS

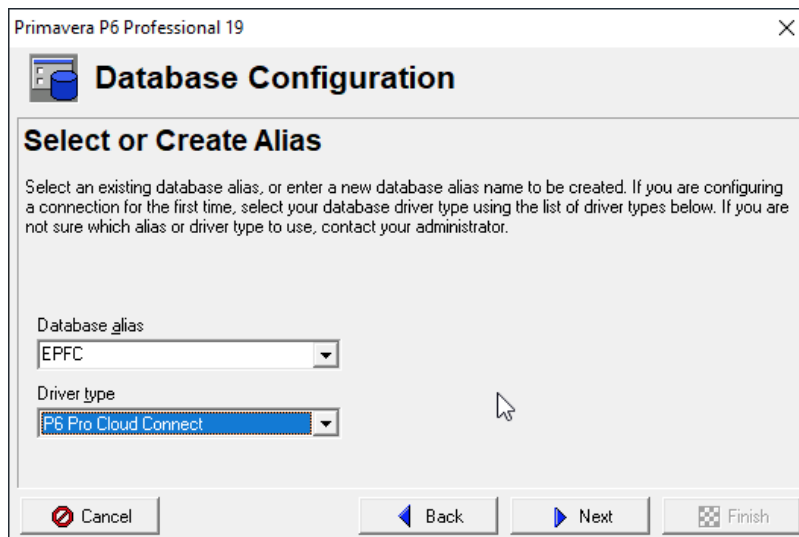
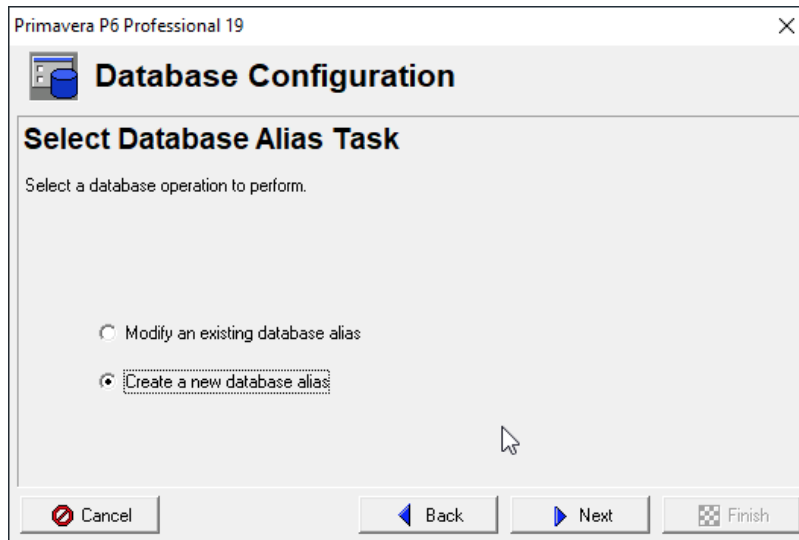
Open Windows menu and click over "Database Configuration 19 (x64)



Click "Next"

Select "Create a new database alias"

Click "Next"



Define the "Database Alias"

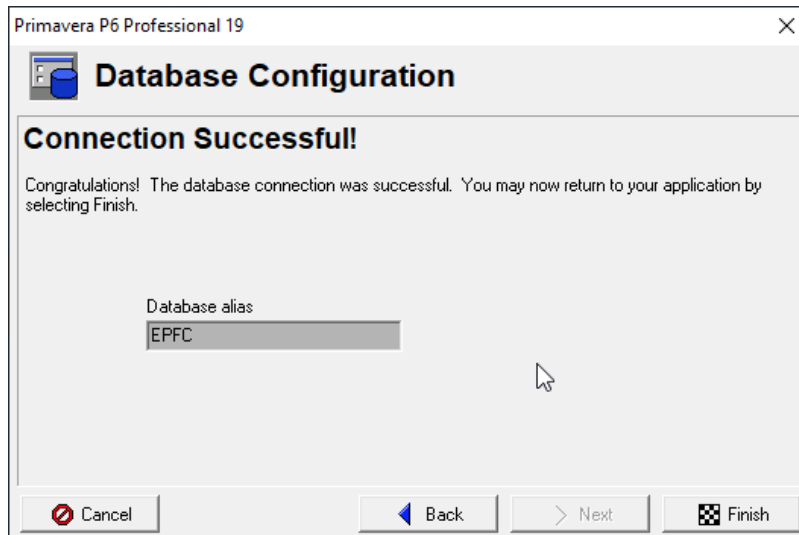
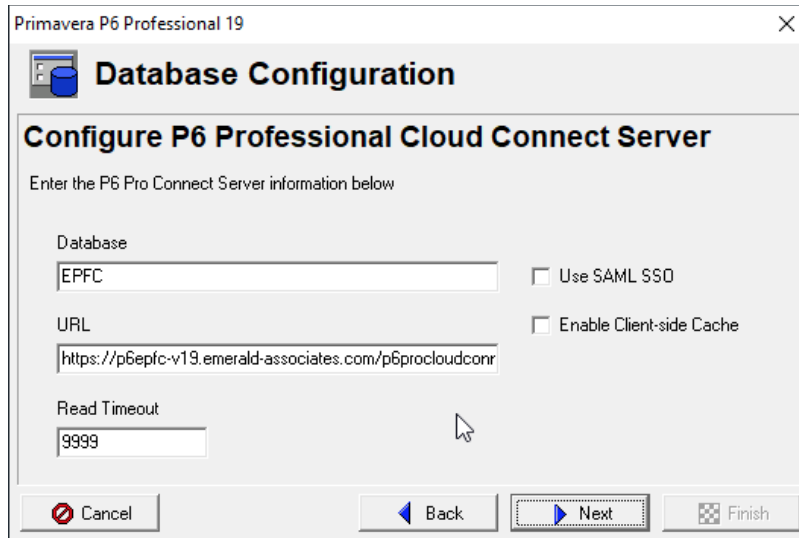
Select "Driver Type" as
"P6 Pro Cloud Connect"

Use the informations provided
on [Database connections](#)

Click "Next"

Use the informations provided
on [Database connections](#)

Click "Next"

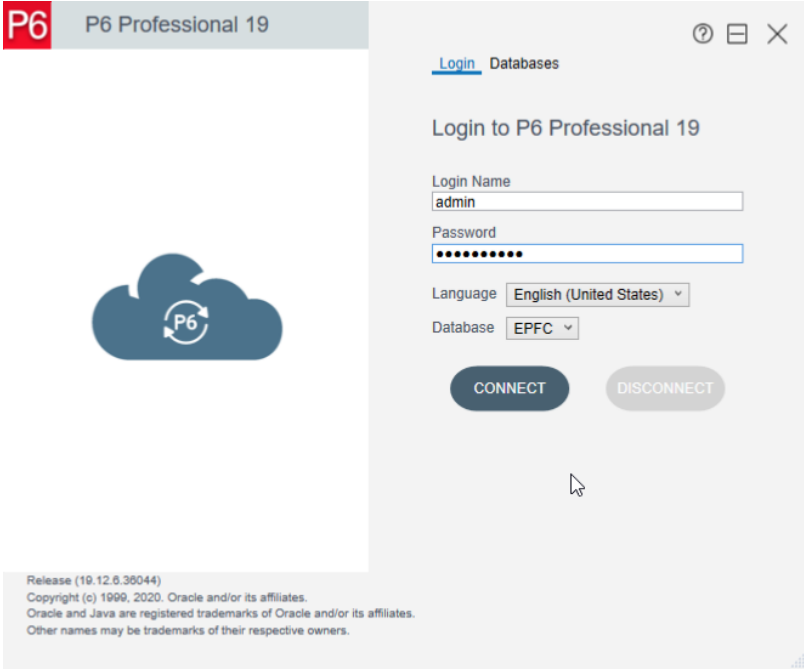
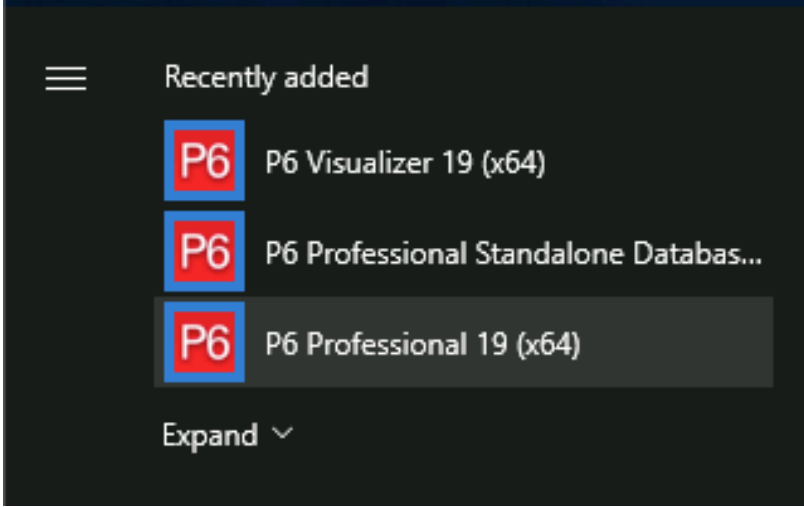


Click "Finish".

Repeat the procedure to add the other databases.

Running P6

Click on the Windows icon and select search for "P6 Professional 19 (x64)".



Enter username and password.

Select the database;

Click Connect

Primavera P6 Professional 19: (No current project)

File Edit View Project Enterprise Tools Help

Projects

Layout: Projects

Project ID	Project Name	Total Activities	Strategic Priority	July 2020				August 2020					
				28	05	12	19	26	02	09	16	23	
EPFC Corp	EPFC Corporation	23806	500										
KDST	Kitchen Duties Scheduling Te...	0	500										
MCC	MCC and Power Gen Templat...	0	500										
Engineering	Engineering Project	0	500										
Fabrication	Fabrication Projects	0	500										
SMU-116	SEMCAMS - Wapiti Schedule	0	500										
SMU119	SemCAMS 11-05 Frac Water	0	500										
ADWEM 18-047	ADG - Wembley South Gather	0	500										
VAL-101	VAL-101	0	500										
SMU-108	SEMCAMS - Frac Water Well	0	500										
PEM2019-125	Pembina - Hylthe Brainard - Are	0	500										
PEM2019-126	Pembina - Hylthe Brainard - Are	0	500										
SMU-124	SEMCAMS - Karr South 05-35	0	500										
SMU-124 - B4	SEMCAMS - Karr South 05-35	0	500										
ABC-Desert	ABC-Desert Ltd - Auto G	0	500										

General Notebook Budget Log Spending Plan Budget Summary Dates Funding Codes Defaults Resources Settings Calculations

EPS ID: EPFC Corp EPS Name: EPFC Corporation
 Status: Active Responsible Manager: Mike Esfarjani Project Leveling Priority: 10
 Check Out Status: Checked In Checked Out By: Date Checked Out:
 Project Web Site URL: Launch...

Portfolio: All Projects Access Mode: Data Date: 31-Dec-10 00:00 Baseline: Current Project User: admin DB: EPFC (EPPM)